

A wide-angle photograph of a wetland landscape at dusk or dawn. The sky is a pale, hazy blue-grey, filled with numerous birds in flight. In the middle ground, a large flock of white whooping cranes is gathered on a flat, muddy or sandy area. Some cranes are standing, while others are in motion. In the foreground, a few more cranes are visible, including one that appears to be a juvenile with brownish plumage. The background shows a line of trees and distant structures under the soft light of the sky.

# Whooping Crane Roost Site Selection

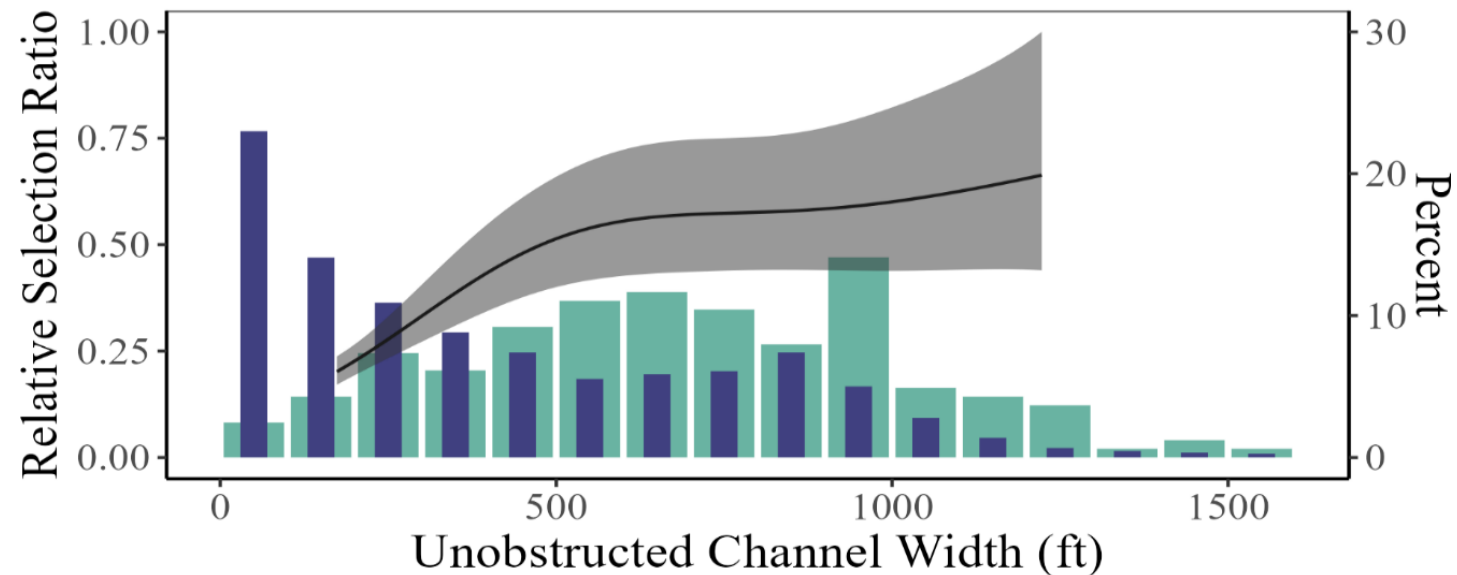
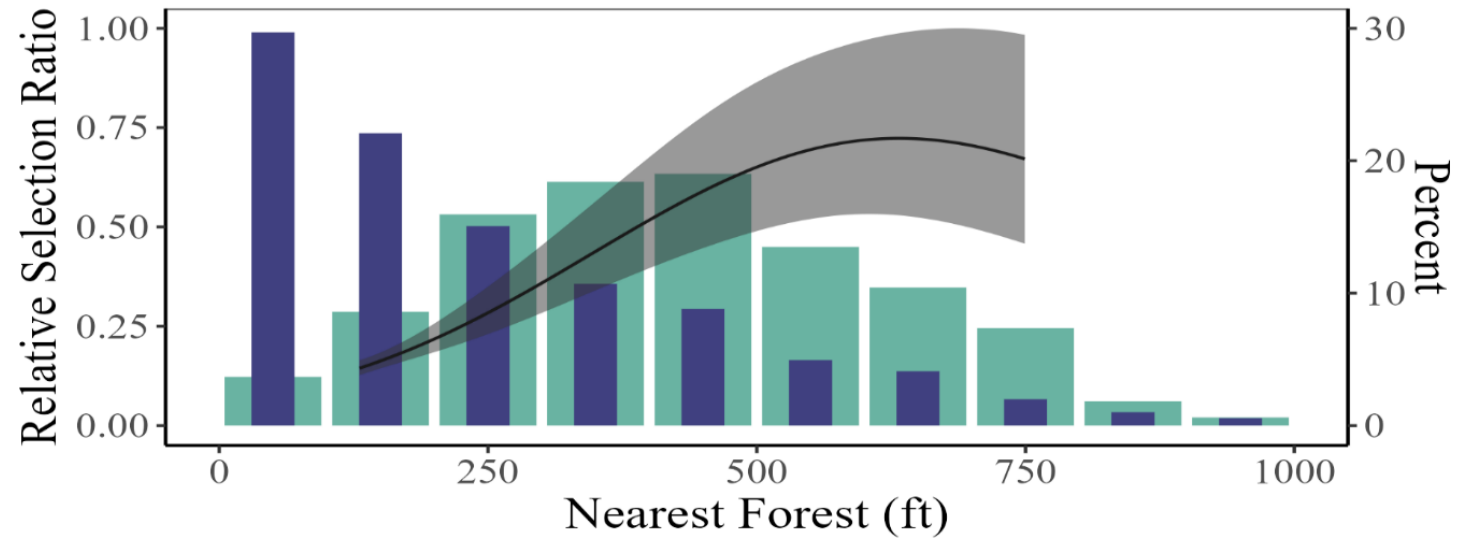
Patrick Farrell

July 2025 TAC Meeting

# Roost Site Selection – Results with Tables

Model	Variables	df	AIC	$\Delta$ AIC	Weight
27	UOCW + NF + MM + AW + DE	174.32	2784.93	0.00	0.28
28	UOCW + NF + MM + AW + DE + UOCW*DE	174.32	2784.93	0.00	0.28
22	UOCW + NF + DE + UOCW*DE	169.76	2785.19	0.26	0.25
<b>21</b>	<b>UOCW + NF + DE</b>	<b>170.02</b>	<b>2785.73</b>	<b>0.80</b>	<b>0.19</b>
24	UOCW + NF + MM + AW	173.56	2796.67	11.74	0.00

# Roost Site Selection – Results with Tables

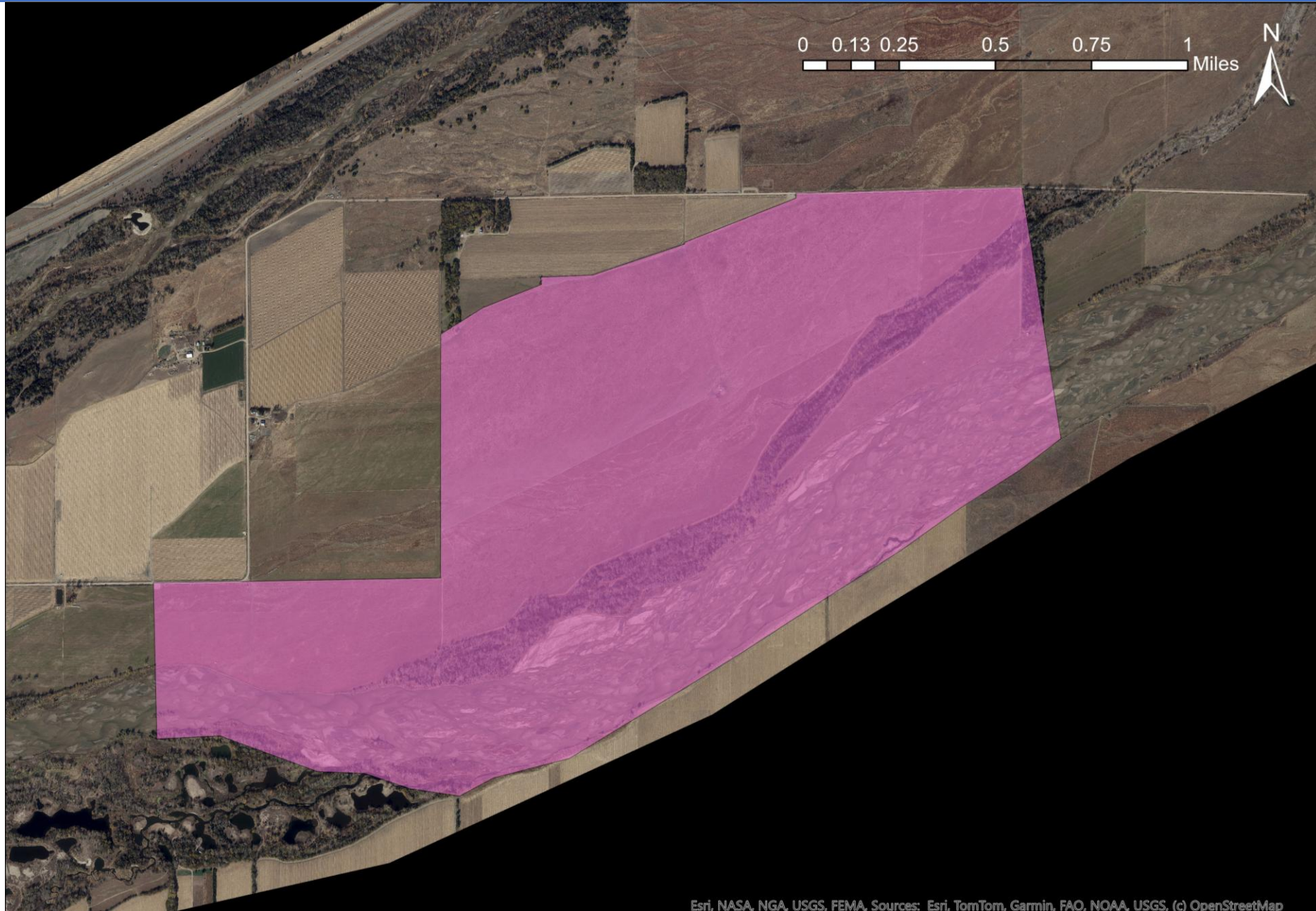


## PRRIP and Management Contributions

- Was roosting greater after PRRIP acquired areas for management?
- Are conditions at managed areas (PRRIP and conservation partners) different than those at unmanaged areas?
  - Nearest forest
  - Unobstructed Channel Width

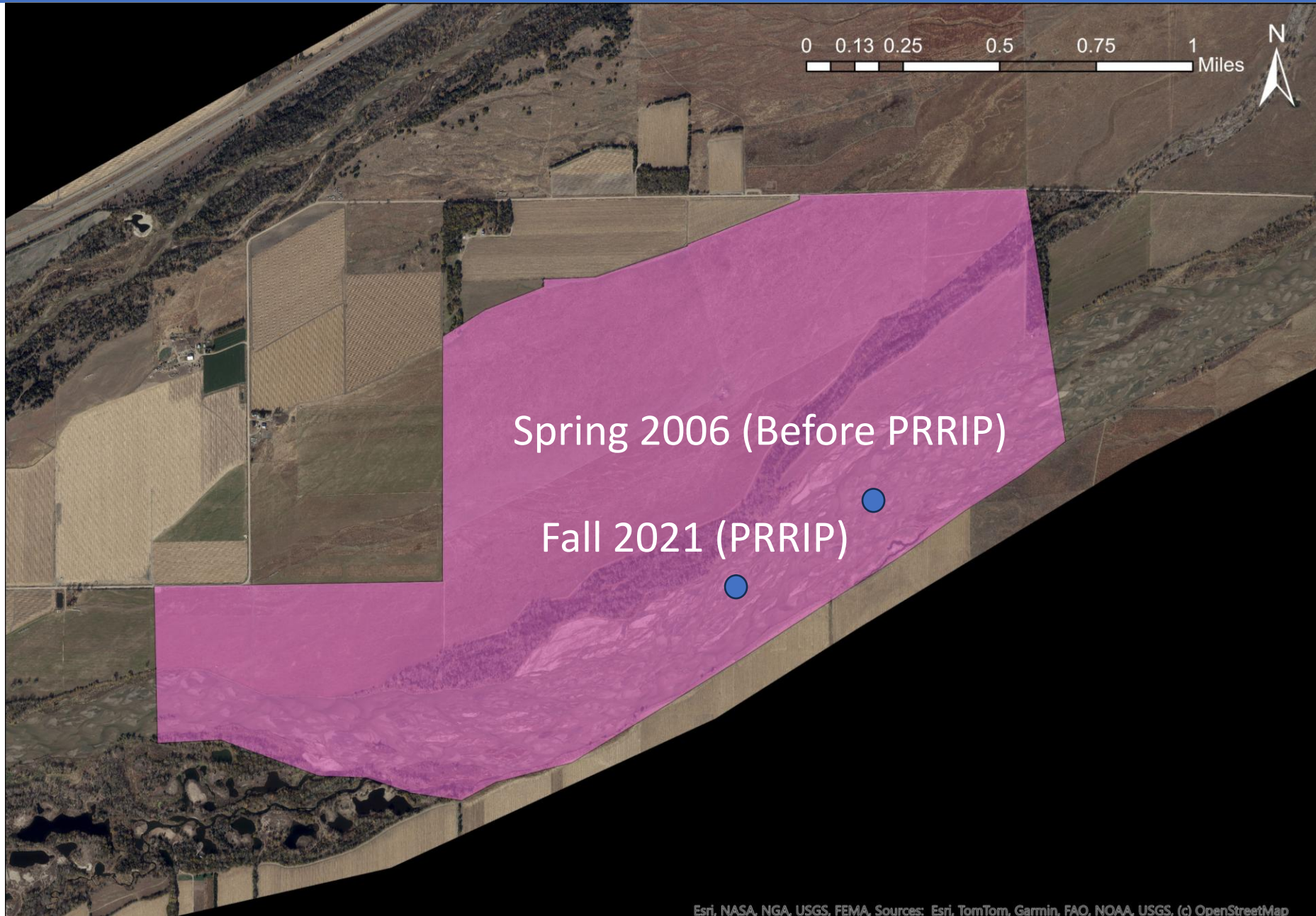


# PRRIP Contribution to Whooping Crane Roosting



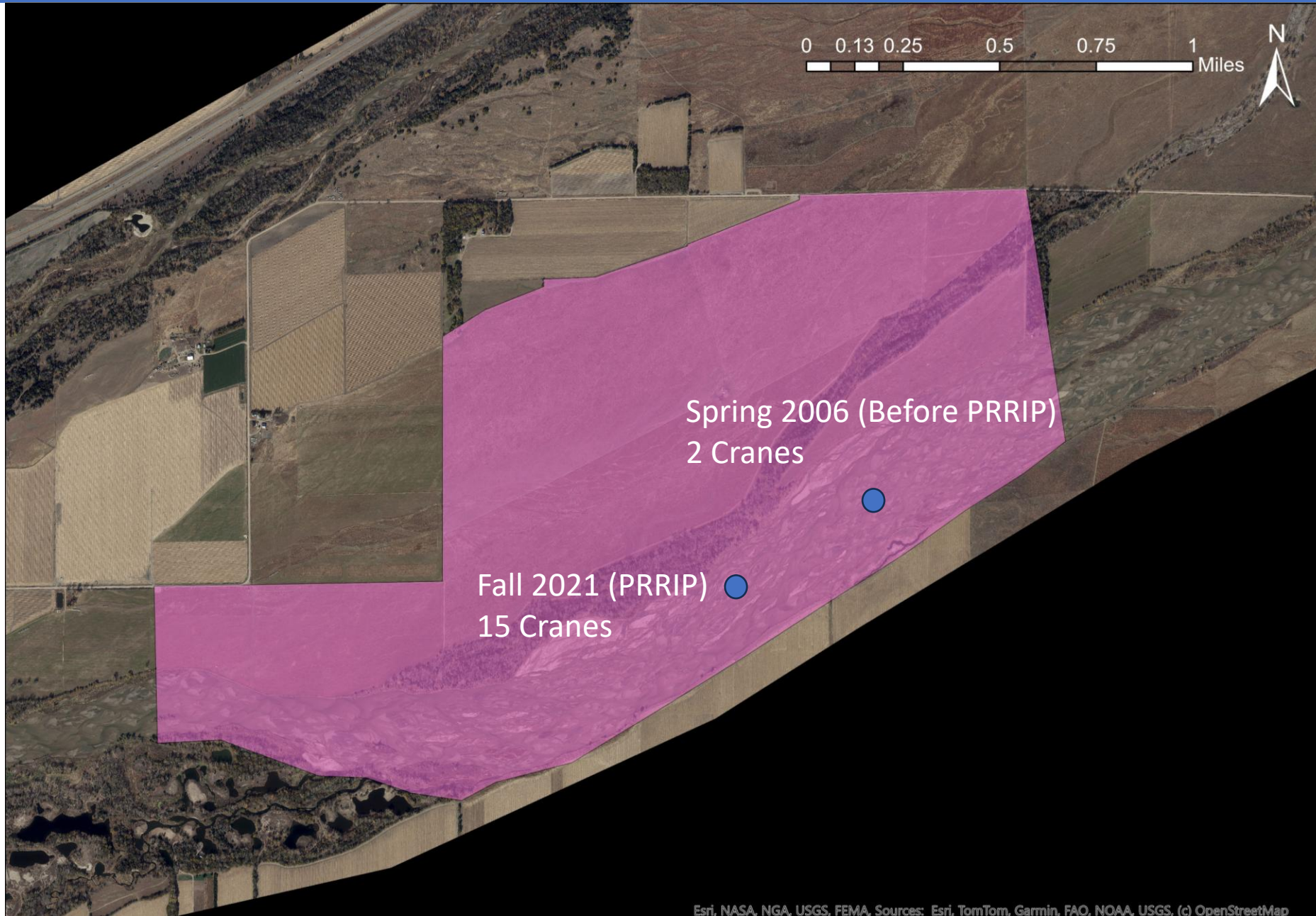


# PRRIP Contribution to Whooping Crane Roosting



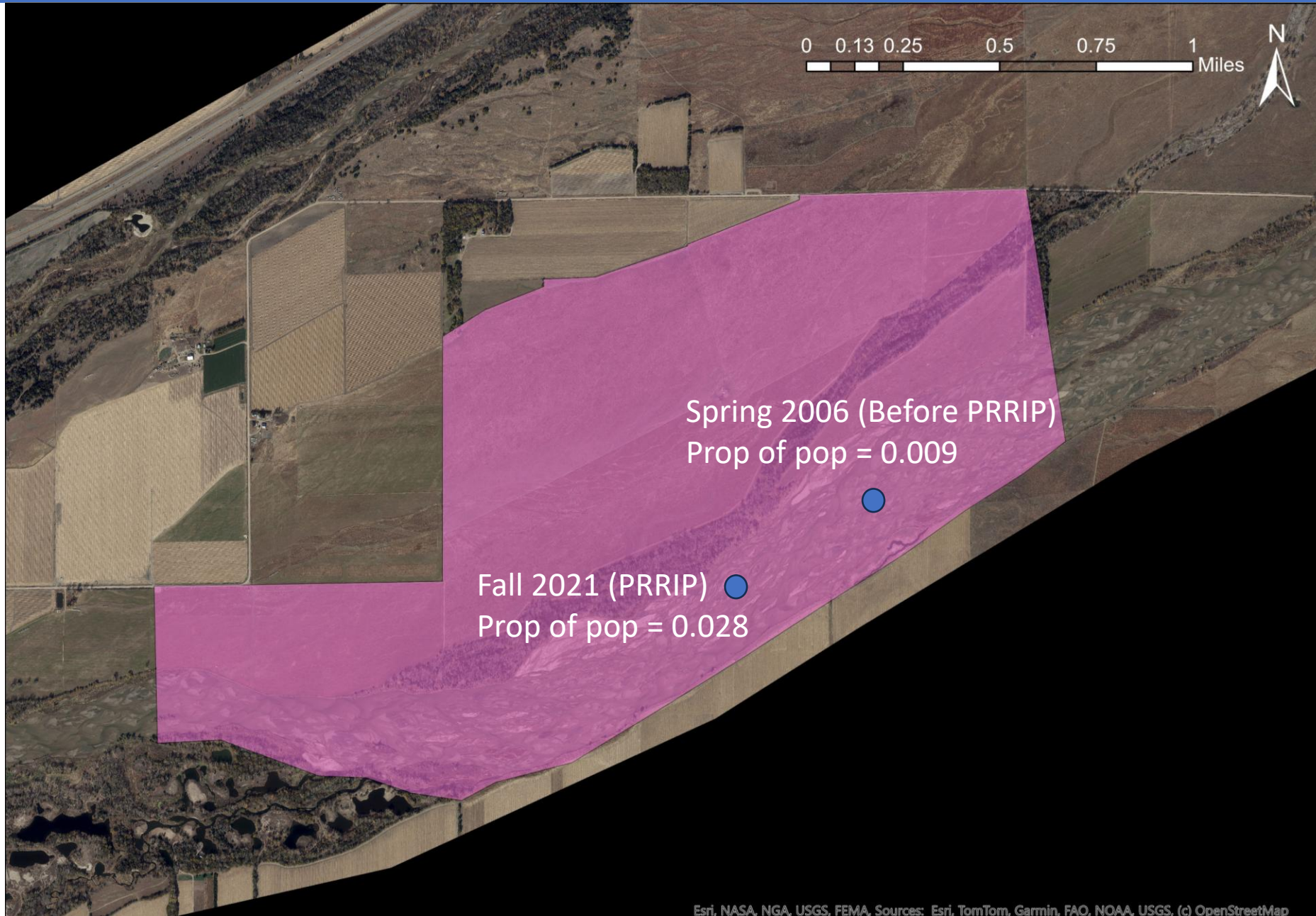


# PRRIP Contribution to Whooping Crane Roosting



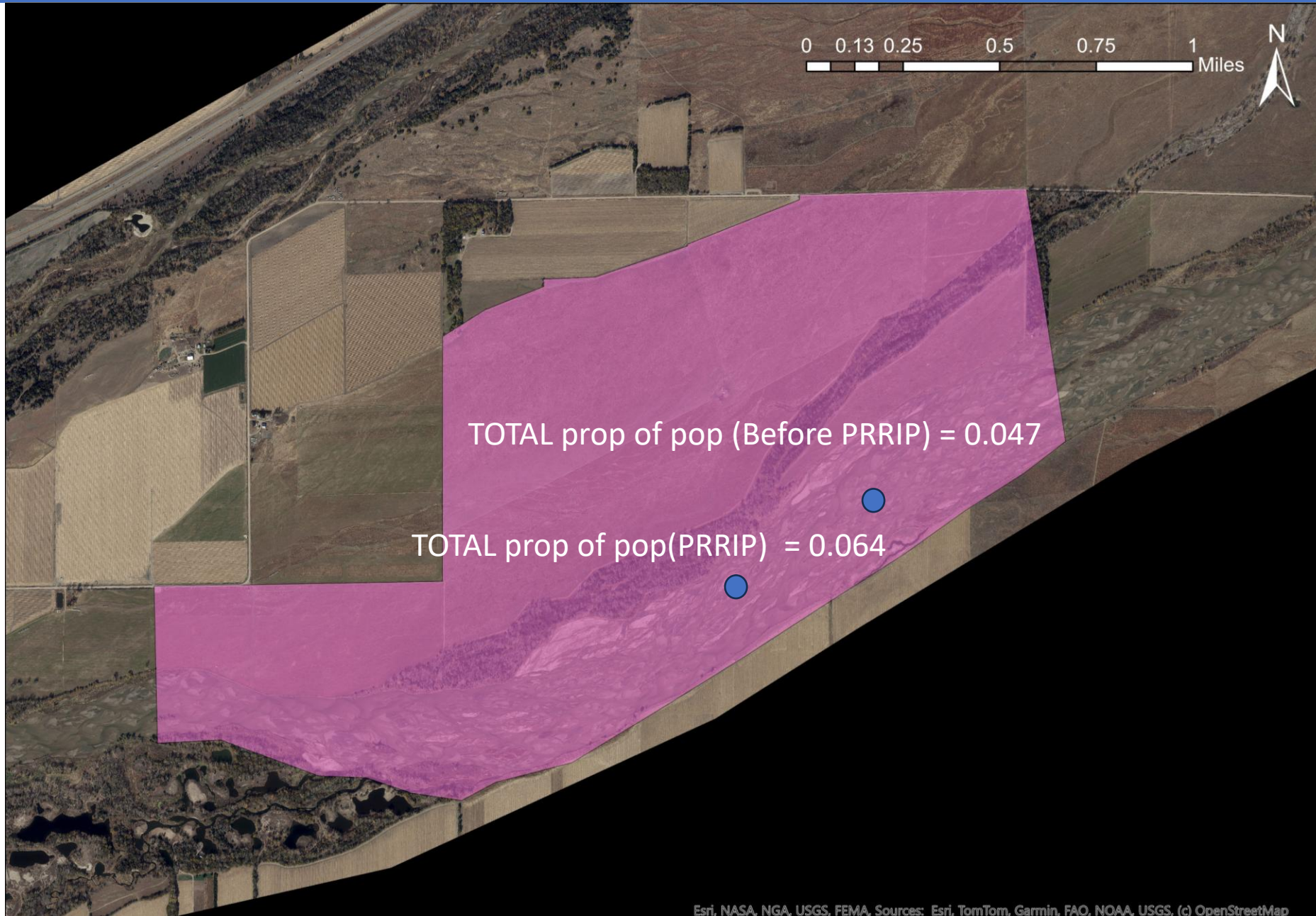


# PRRIP Contribution to Whooping Crane Roosting



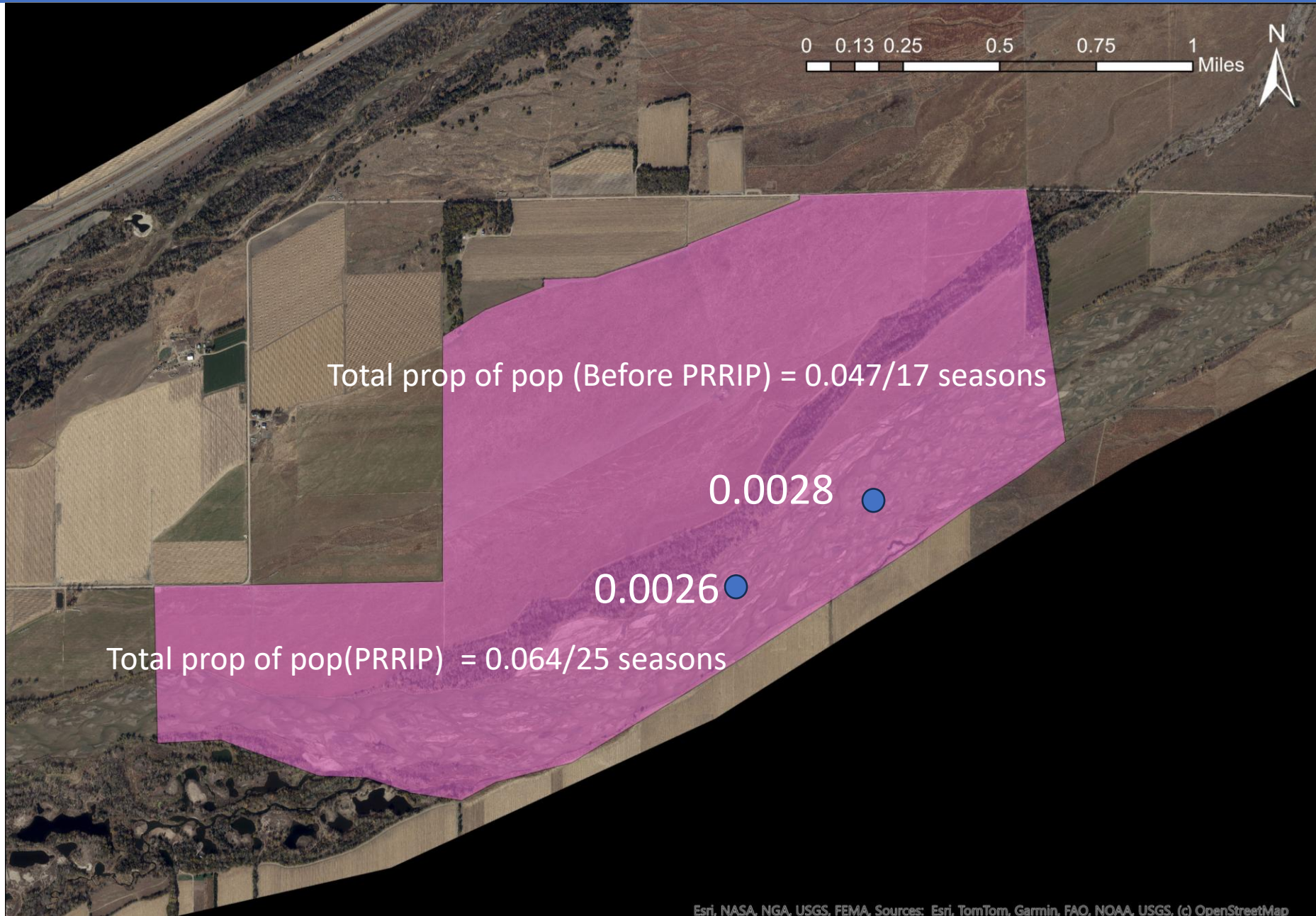


# PRRIP Contribution to Whooping Crane Roosting





# PRRIP Contribution to Whooping Crane Roosting





# PRRIP Contribution to Whooping Crane Roosting

## Results

- 158%\* in average proportion of pop across sites
- 184%\* across east AHR sites
- 178%\* across west AHR sites
- Non-significant difference (per managed area)

*\*Percentages are different from the report due to the addition of one survey season in spring 2022 as part of the PRRIP calculation*

# Contribution of channel management to roosting conditions

## Three management groups

- 1 – PRRIP
- 2 – Conservation Partners
- 3 – No Management

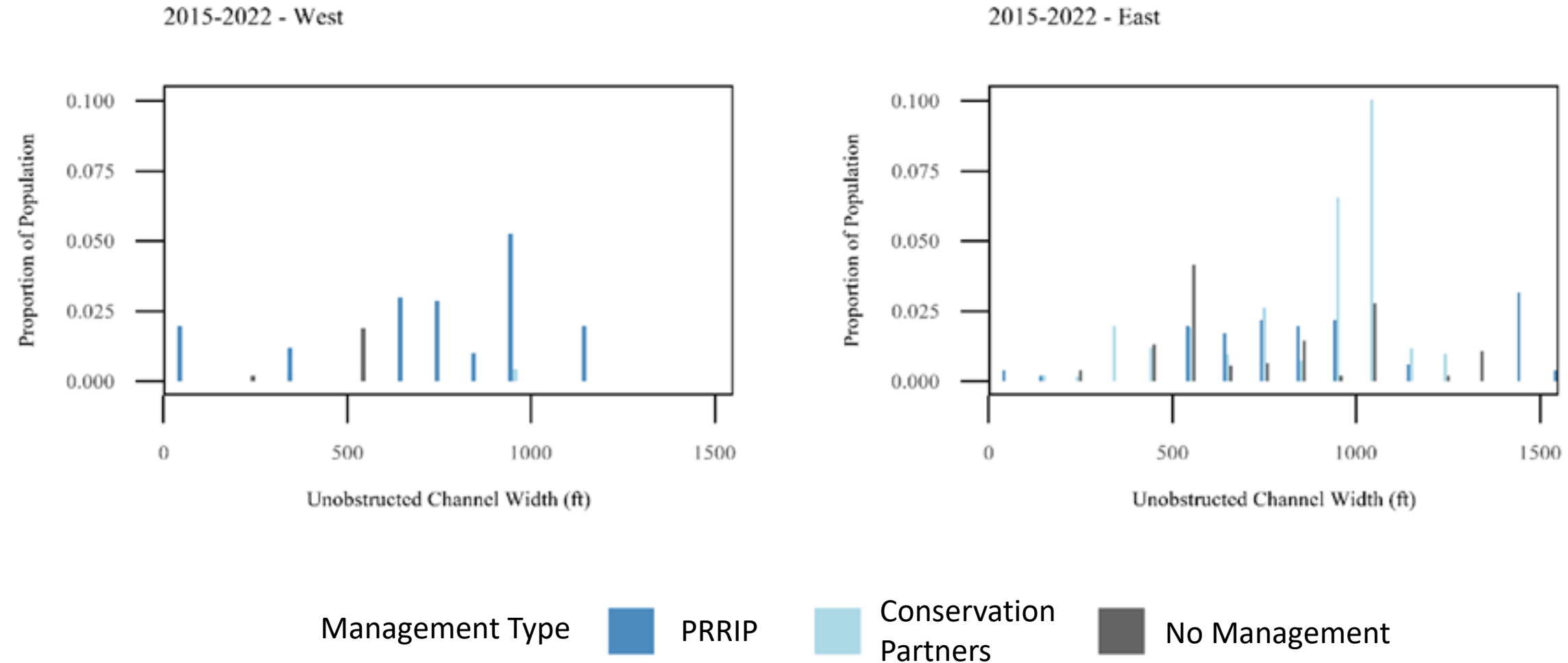
## Three Time Periods

- 2001 - 2006
- 2007 - 2014
- 2015 - 2022



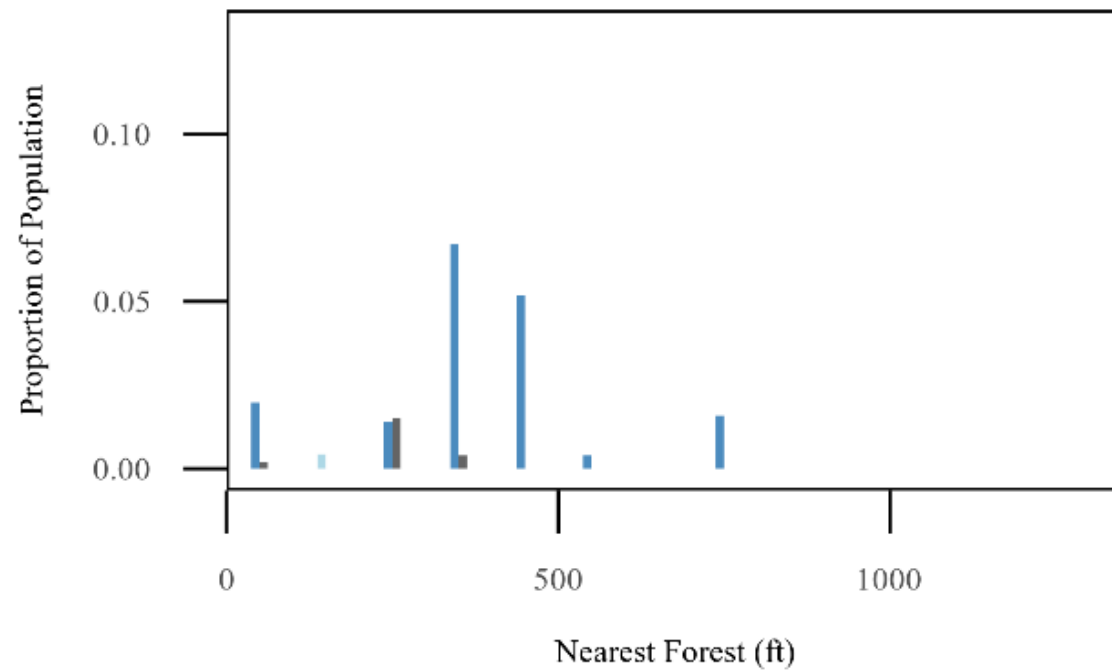


# Contribution of channel management to roosting conditions

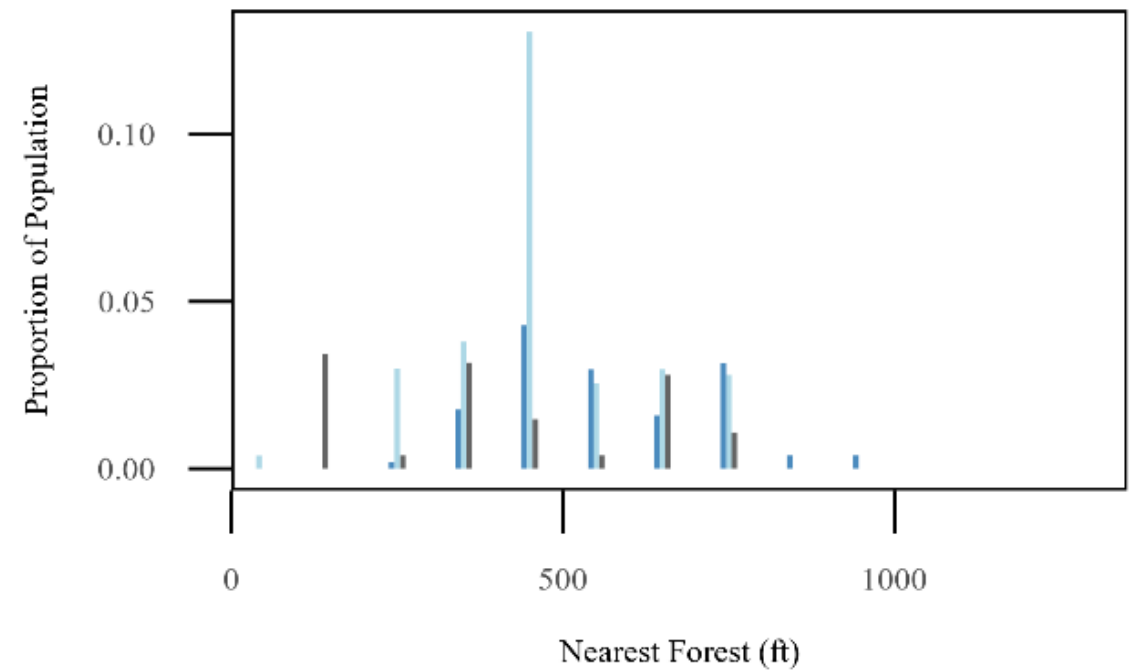


# Contribution of channel management to roosting conditions

2015-2022 - West



2015-2022 - East



Management Type

PRRIP	Conservation Partners	No Management
-------	-----------------------	---------------



# Next Steps

- TAC review of new additions
  - Any other suggestion?
  - DUE August 12th
- Two ways forward
  - Virtual revisions and TAC motion (offline) OR
  - More extensive revisions for October TAC review